

# Room Setups for UC BALLROOM AB & BC

---

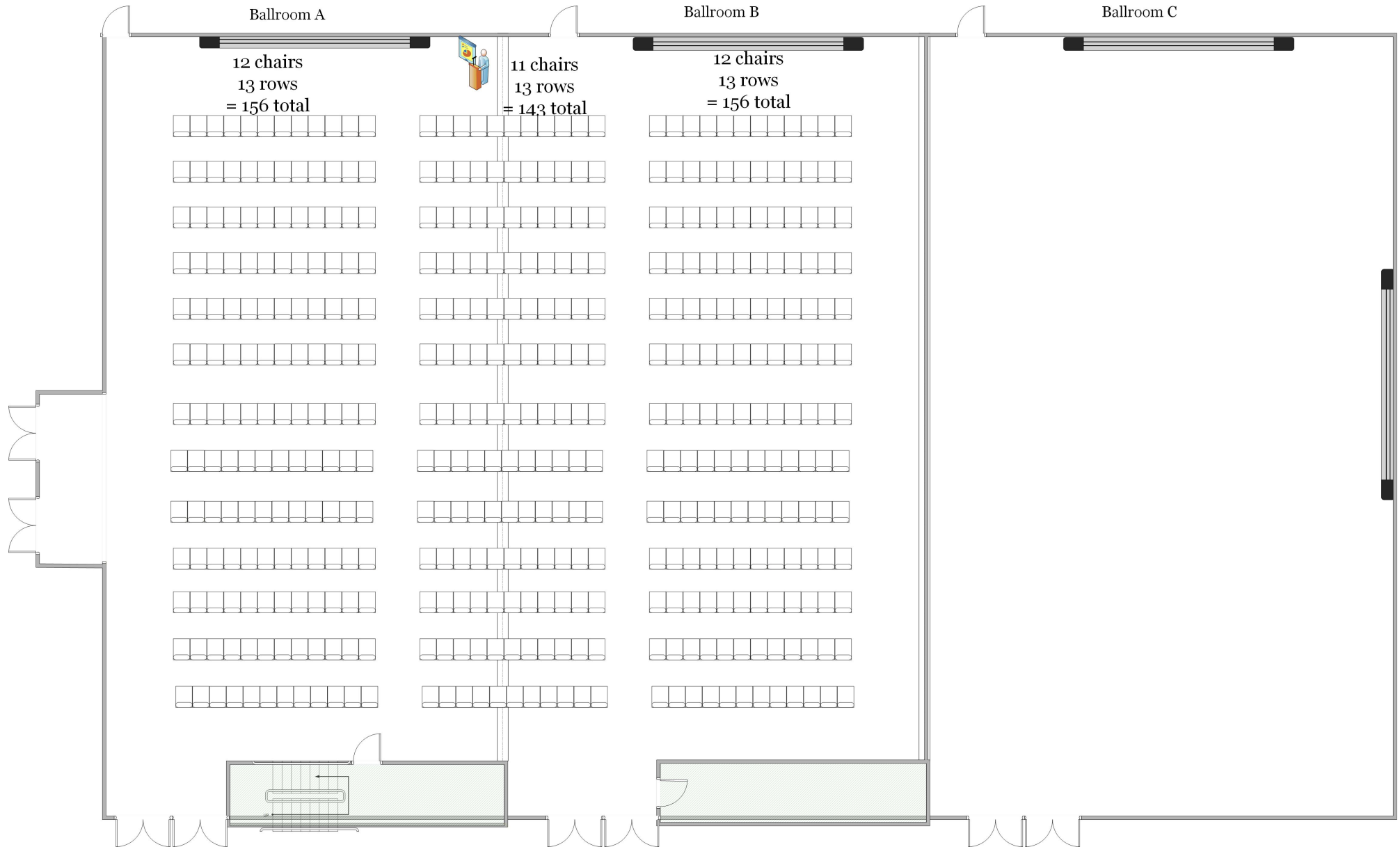
\*Please note that adding additional furniture to the room will decrease the listed capacities.

Diagram shows BALLROOM AB as a separate room

# LECTURE

Capacity - 455

Ballroom AB  
Capacity - 455



# LECTURE

Diagram shows BALLROOM BC as a separate room

6 ft from walls to chairs  
4ft aisle in between chair columns

Capacity - 450  
Ballroom B

Ballroom A

Ballroom C

Ballroom BC  
Facing North  
Capacity - 450

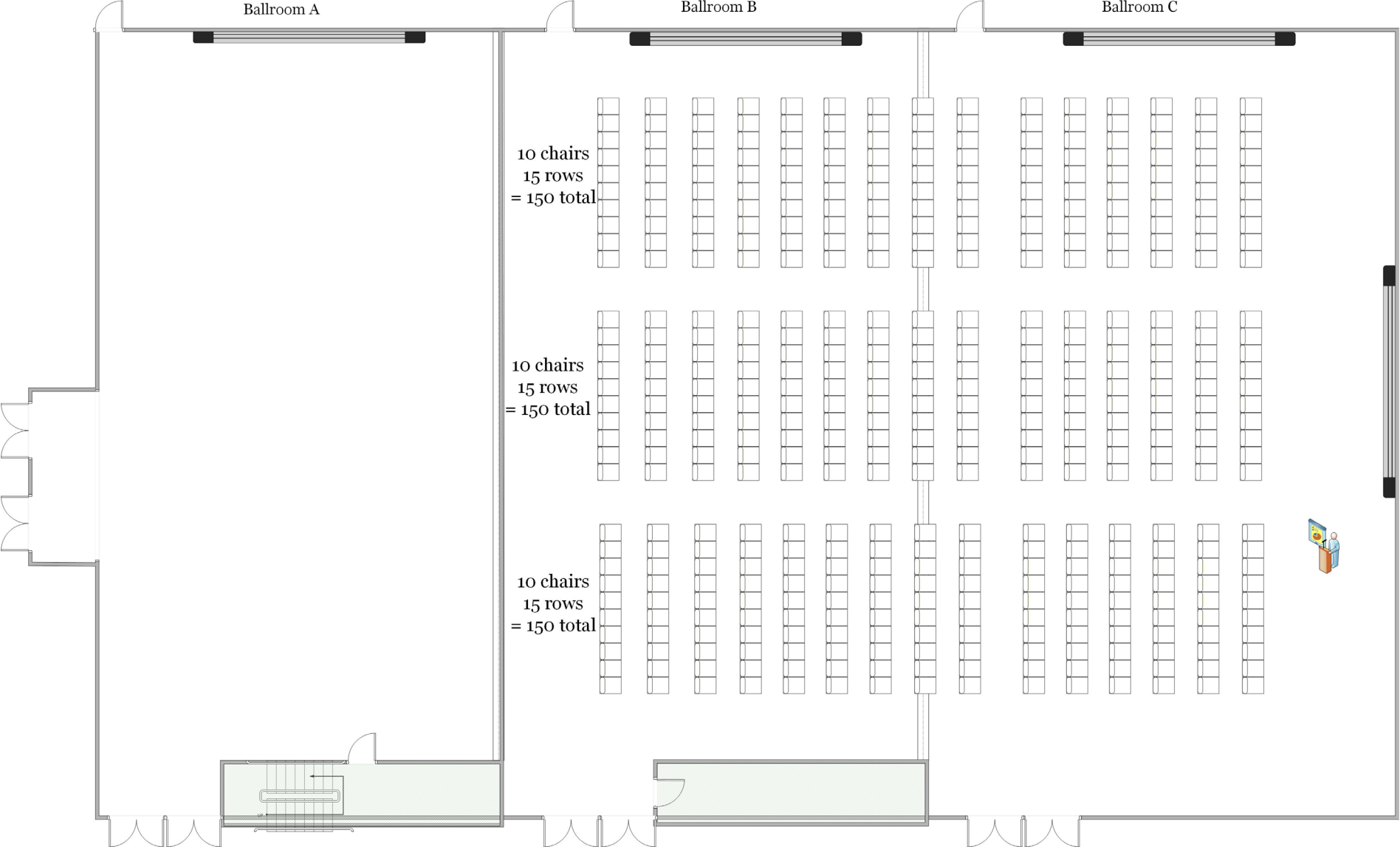


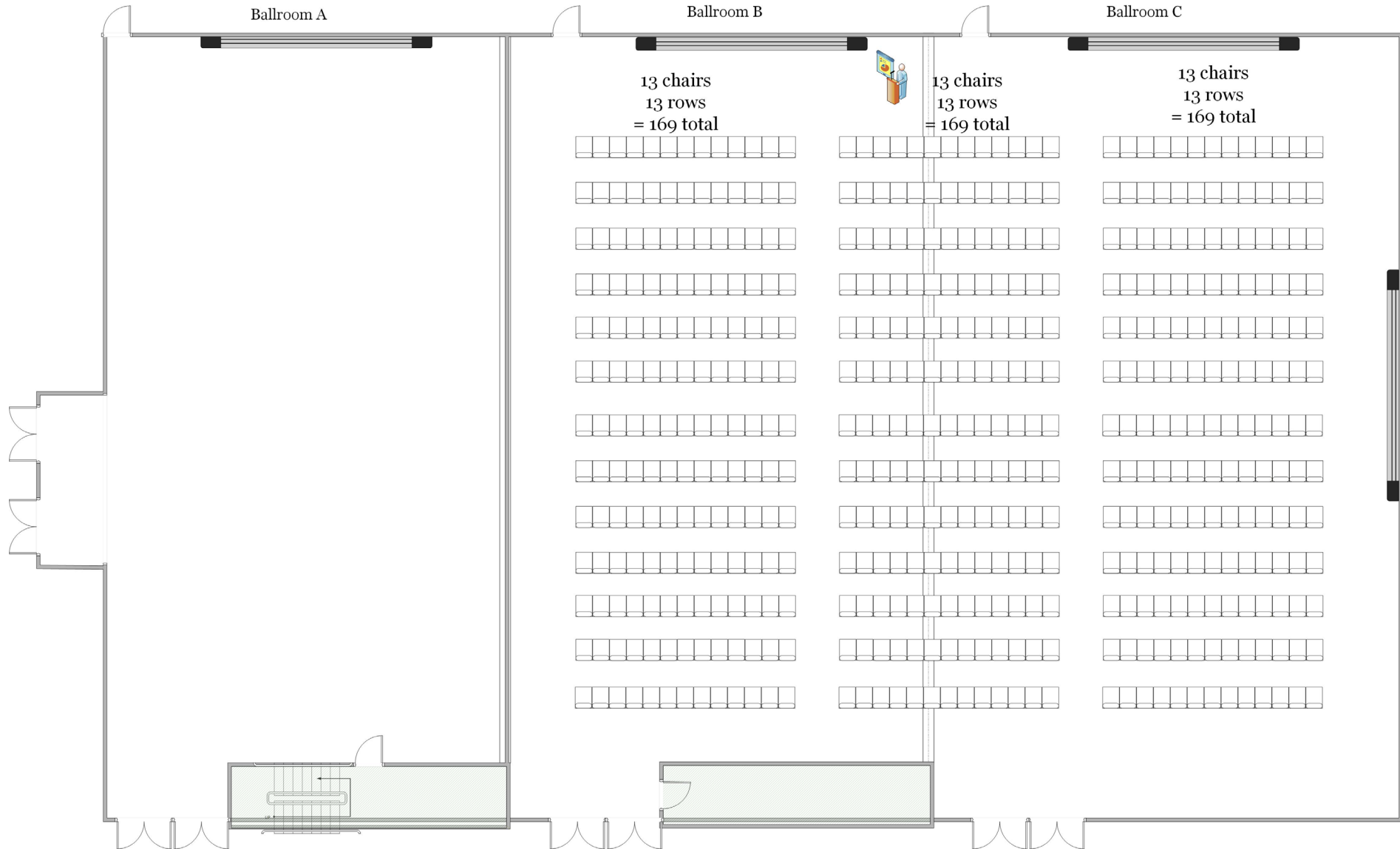
Diagram shows  
BALLROOM BC  
as a separate room

# LECTURE

6 ft from walls to chairs  
4ft aisle in between chair columns

Capacity - 507

Ballroom BC  
Facing walls  
Capacity - 507



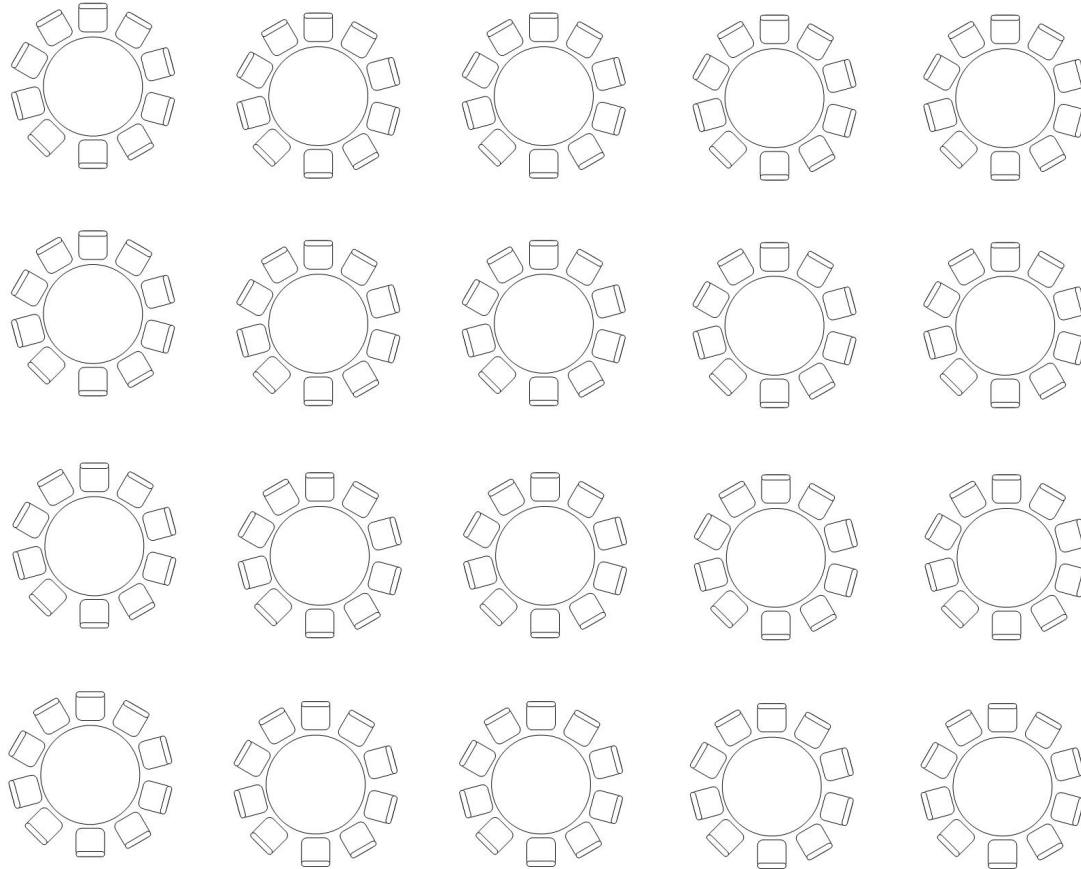
# BANQUET ROUNDS

Diagram shows  
BALLROOM AB as  
one room

Ballroom A

Ballroom B

Ballroom C



Ballroom AB  
Capacity - 200

# BANQUET ROUNDS

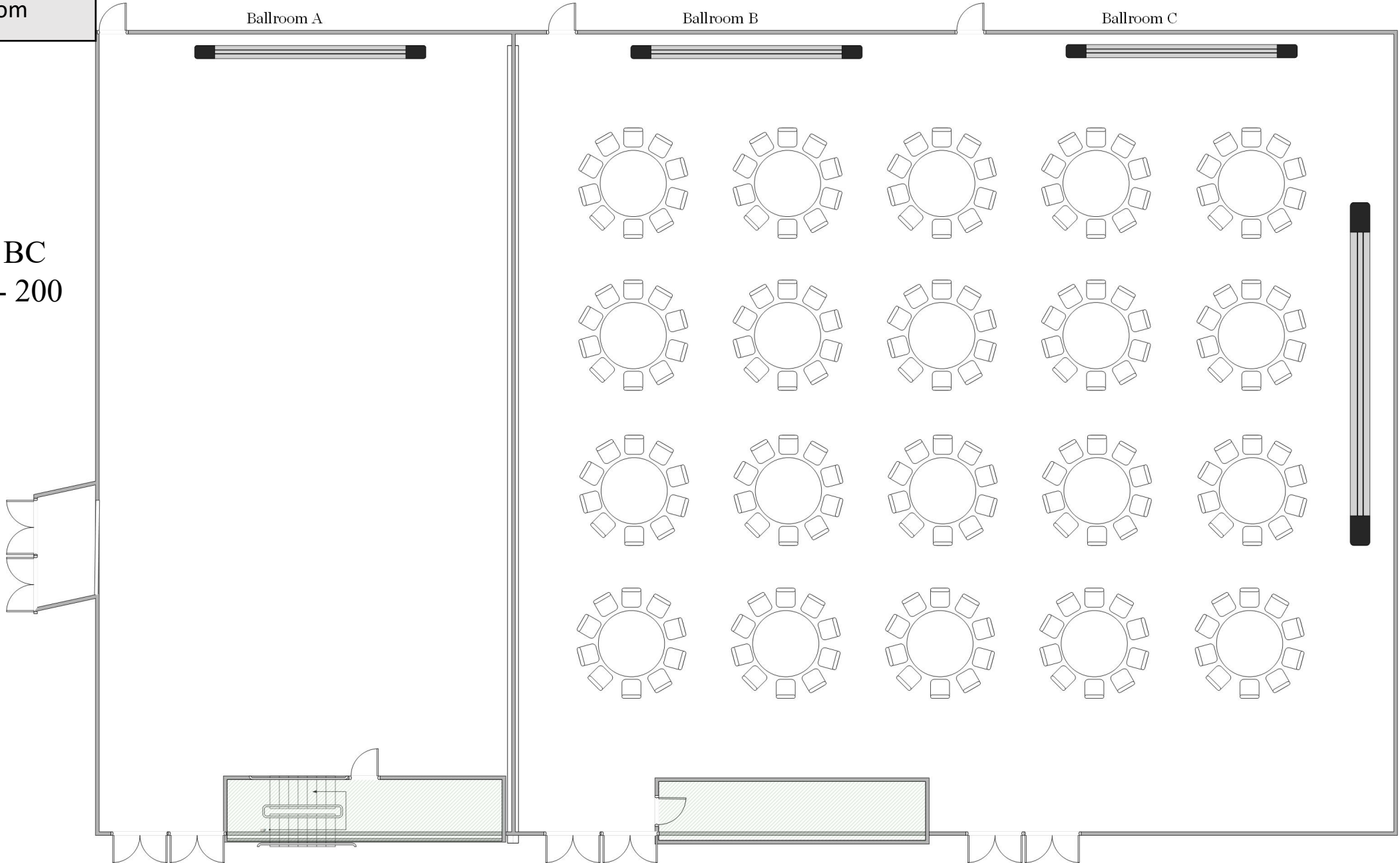
Diagram shows  
BALLROOM BC as  
one room

Ballroom A

Ballroom B

Ballroom C

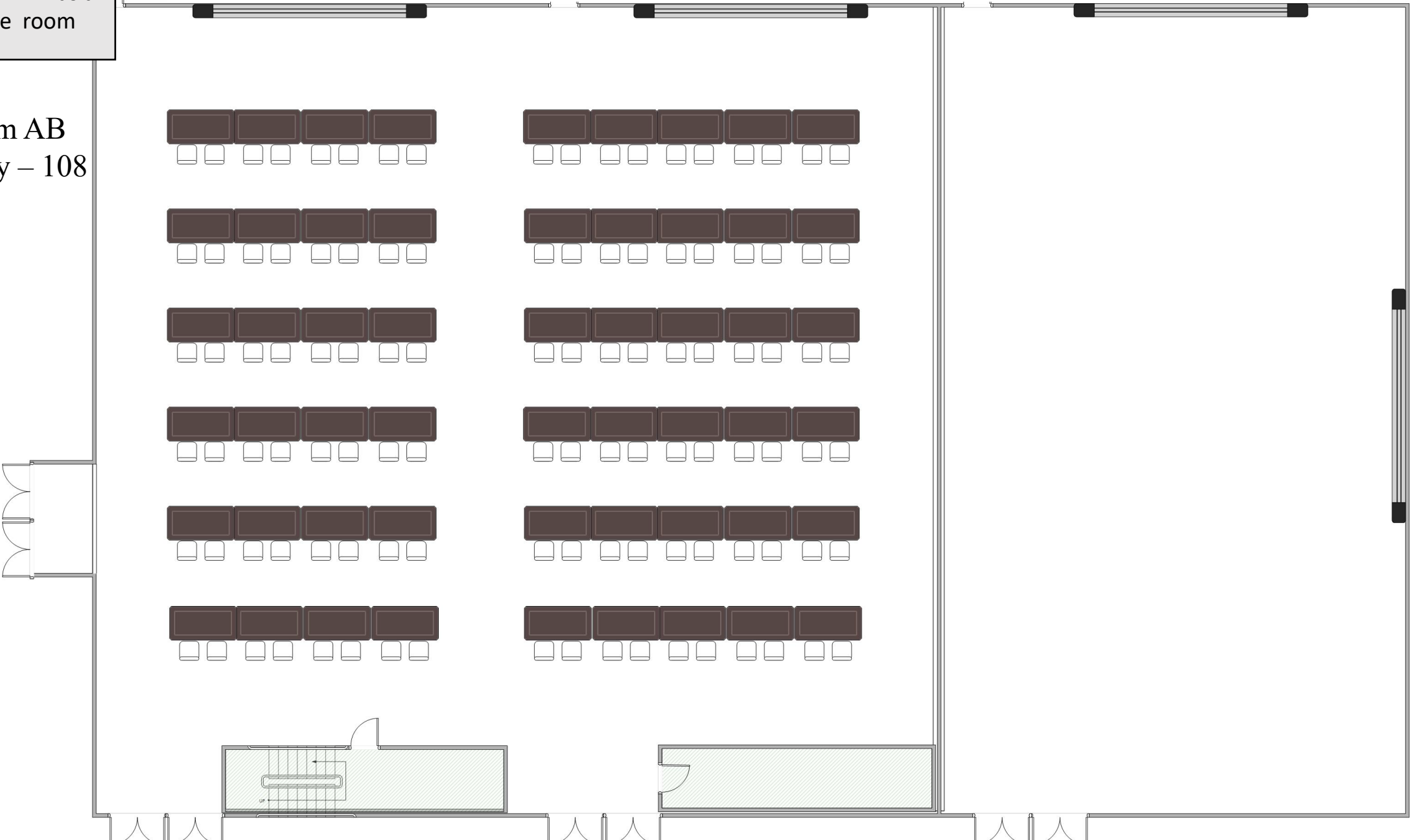
Ballroom BC  
Capacity - 200



# CLASSROOM

Diagram shows  
BALLROOM AB as a  
separate room

Ballroom AB  
Capacity – 108



# CLASSROOM

Diagram shows  
BALLROOM BC as a  
separate room

Ballroom BC  
Facing wall  
Capacity – 120

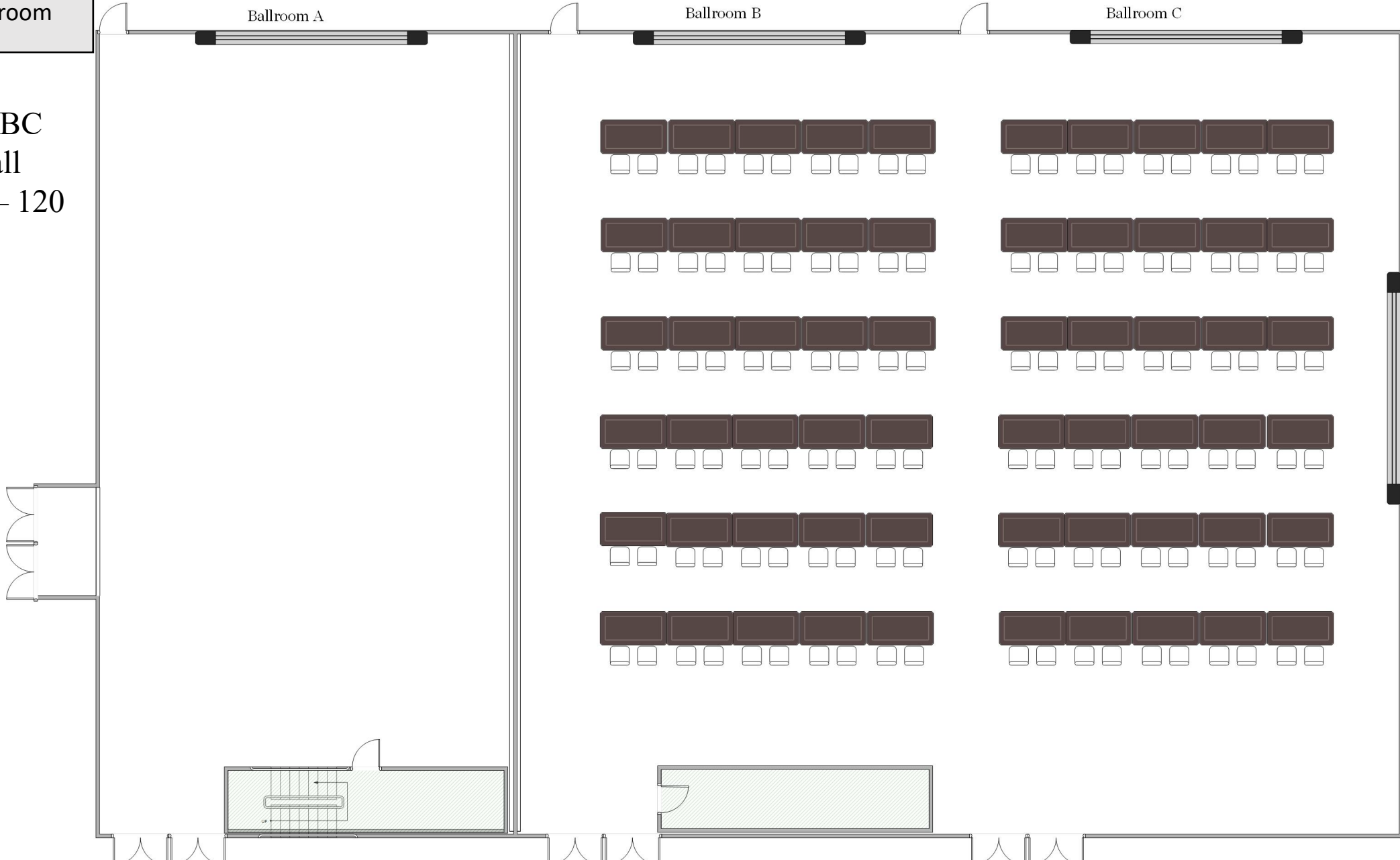


Diagram shows  
BALLROOM BC as a  
separate room

# CLASSROOM

Ballroom A

Ballroom B

Ballroom C

Ballroom BC  
Facing north  
Capacity – 112



# CONFERENCE SQUARE

Diagram shows  
BALLROOM AB as a  
separate room

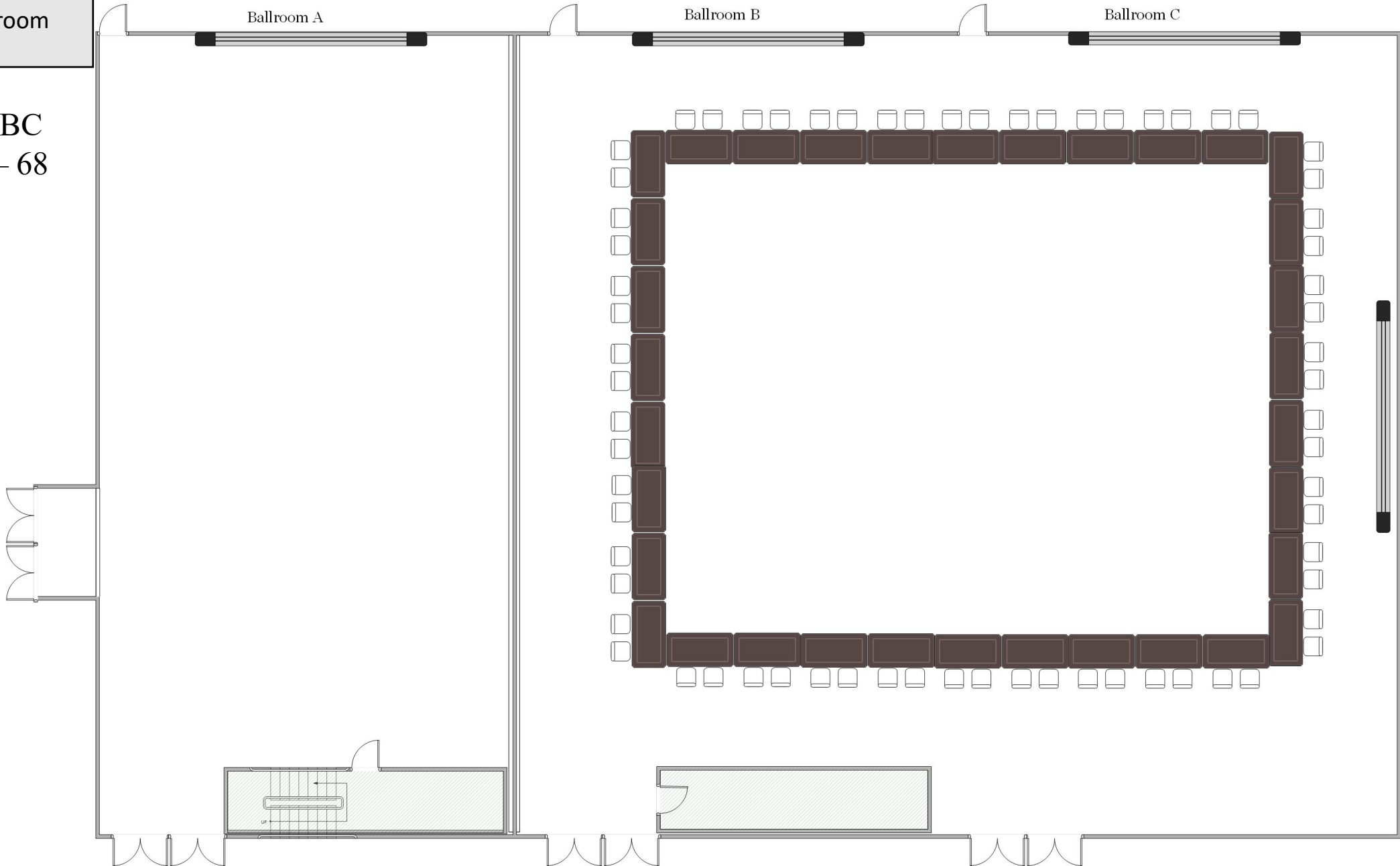
**Ballroom AB**  
Capacity – 64



# CONFERENCE SQUARE

Diagram shows  
BALLROOM AB as a  
separate room

**Ballroom BC**  
Capacity – 68



# EXHIBIT

Diagram shows  
BALLROOM AB as a  
separate room

Ballroom AB  
Capacity – 96  
48 tables



# EXHIBIT

Diagram shows  
BALLROOM BC as a  
separate room

Ballroom BC  
Capacity – 114  
57 tables

